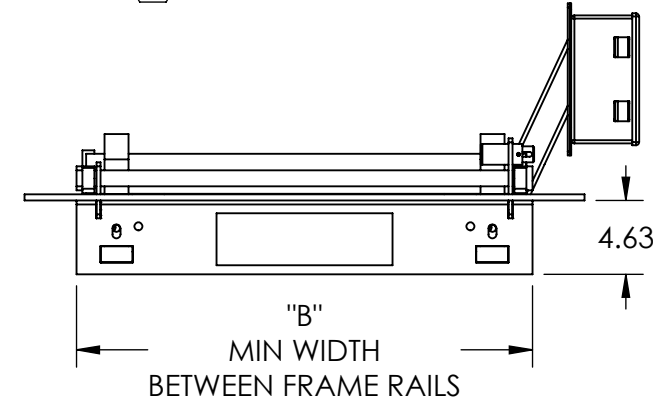
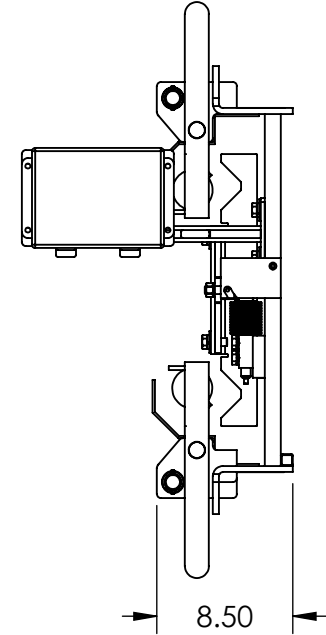
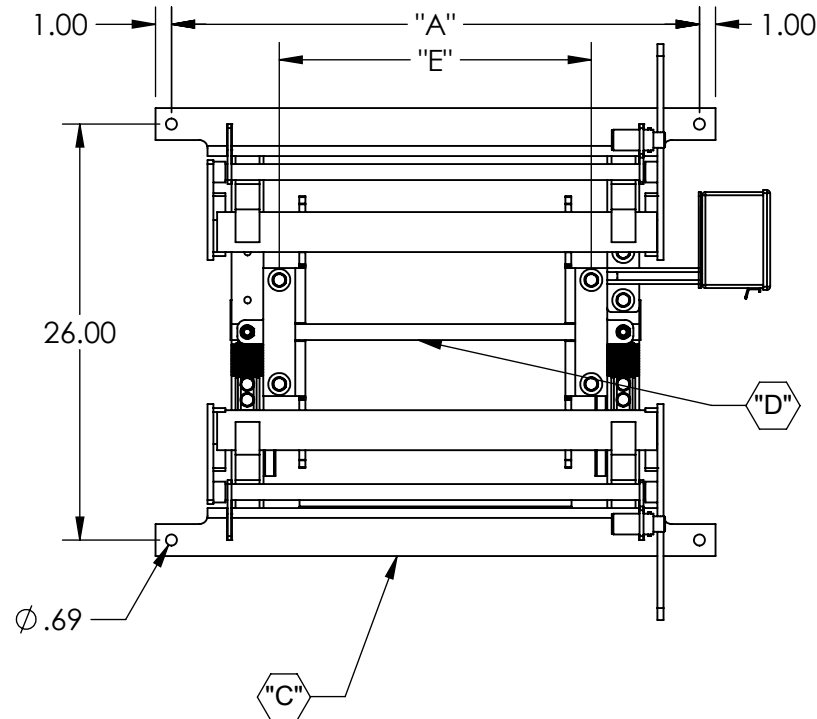
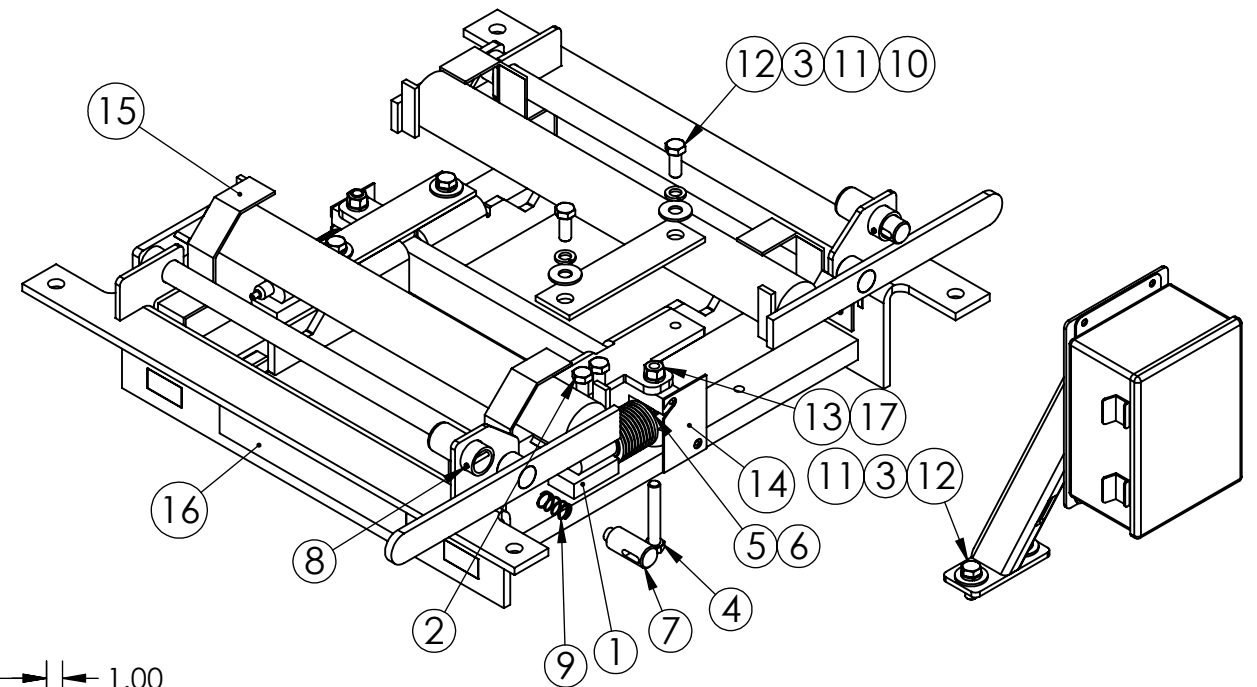


ASSY PART NO.	BELT WIDTH	"A"	"B"	"C" FRAME	"D" SPREADER	"E"
30421501	18.00	27.00	22.5	30421601	30421701	13.50
30421502	24.00	33.00	28.50	30421602	30421702	19.50
30421503	30.00	39.00	34.50	30421603	30421703	25.50
30421504	36.00	45.00	40.50	30421604	30421704	31.50
30421505	42.00	51.00	46.50	30421605	30421705	37.50
30421506	48.00	57.00	52.50	30421606	30421706	43.50
30421507	54.00	63.00	58.50	30421607	30421707	49.50

REV	DESCRIPTION OF CHANGE	BY	DATE



ITEM	PART NO	DESCRIPTION	M/B	QTY.
1	20494401	PAD, MOUNTING, LOAD CELL	M	2
2	101949	FST, HHCS SS 1/2-13 X 2-1/2 LG	B	4
3	200547	FST, WASHER LOCK ZP 1/2	B	6
4	105571	FST, HHCS SS 1/2-13 X 3	B	2
5	20973400	WASHER, RADIAL, CONVEX	B	2
6	20973401	WASHER, RADIAL CONCAVE	B	2
7	20353700	PIN, LATCH, CAL WT LIFTER	B	2
8	101354	PIN, ROLL 3/16" X 1.50" LONG	B	2
9	101353	SPRG, LATCH 3/4"DIA X 1-1/4" SS	B	2
10	200043	PLATE, 2 HOLE	M	2
11	200543	FST, WASHER FLAT ZP 1/2	B	6
12	200767	FST, HHCS ZP 1/2-13 X 1-1/4	B	6
13	200762	FST, NUT HEX SS 1/2-13	B	2
14	20988400	BRACKET, SHIPPING	M	2
15	20561300	BRACKET, CAL WT HOLDER	B	4
16	20319700	LABEL, RED, WHITE, BLUE - TECWEIGH	B	2
17	101410	FST, WASHER LOCK SS 1/2	B	6

UNLESS OTHERWISE SPECIFIED DIMENSIONS ARE IN INCHES, TOLERANCES ARE:

WELDMENTS		ASSEMBLIES	
DECIMALS	ANGLES	DECIMALS	ANGLES
.XX ± .06	± 1.0	.XX ± .12	± 1.0
.XXX ± .032		.XXX ± .063	

THE INFORMATION CONTAINED IN THIS DRAWING IS THE SOLE PROPERTY OF TECNETICS INDUSTRIES INC. ANY REPRODUCTION IN PART OR WHOLE WITHOUT THE WRITTEN PERMISSION OF TECNETICS INDUSTRIES INC. IS STRICTLY PROHIBITED.

CAD DRAWING, DO NOT MANUALLY UPDATE
 THIRD ANGLE PROJECTION
 DATE: 12/27/2021
 DRAWN: JRZ
 CHECKED:
 APPROVED:
 DO NOT SCALE FROM DRAWING

TECWEIGH
 1201 N Birch Lake Boulevard, St. Paul, MN 55110

TITLE: ASSY, WY15-03

SIZE: B	DRAWING NUMBER: 30421500	REV:
SCALE: 1:12		SHEET 1 OF 1